

# Customizing OpenTUSK

OpenTUSK Training  
University of Nairobi

Mike Prentice  
michael.prentice@tufts.edu

Tufts University  
Technology for Learning in the Health Sciences

July 2013



# Outline

- 1 Config
- 2 Graphics
- 3 Styles and Colors



# Resources

- Official website:  
<http://opentusk.org/>
- Wiki documentation:  
<https://wikis.uit.tufts.edu/confluence/display/TUSKpub/Home>
- Source code:  
<https://github.com/opentusk/Opentusk>



# Coming Up...

- 1 Config
- 2 Graphics
- 3 Styles and Colors



# OpenTUSK Configuration File

- OpenTUSK configuration is stored in `/usr/local/tusk/conf/tusk.conf`
  - `tusk.conf` is a UTF-8 encoded JSON file
  - Many fields to customize
- 1 Add institution information to `tusk.conf`
  - 2 Add site-related information
  - 3 Add schools



# Add Schools

Add schools by copying the “Default” school included with the template:

```
"Default" : {  
  "Initial"      : "D",  
  "ShortName"   : "default",  
  "DisplayName" : "Default School",  
  "Groups"      : {  
    "SchoolWideUserGroup" : "3",  
    "SchoolAdmin"        : "1",  
    "EvalAdmin"          : "2" } }  
}
```



# Add Schools

Add schools by copying the “Default” school included with the template:

```
"Default" : {
  "Initial"      : "D",
  "ShortName"   : "default",
  "DisplayName" : "Default School",
  "Groups"      : {
    "SchoolWideUserGroup" : "3",
    "SchoolAdmin"         : "1",
    "EvalAdmin"           : "2" } },

"Medical" : {
  "Initial"      : "M",
  "ShortName"   : "med",
  "DisplayName" : "Medical School",
  "Groups"      : {
    "SchoolWideUserGroup" : "3",
    "SchoolAdmin"         : "1",
    "EvalAdmin"           : "2" } }
```



# Coming Up...

- 1 Config
- 2 Graphics**
- 3 Styles and Colors





# Logo

- Any graphics file scaled to a height of 70 pixels
- Not too wide (will cause problems if  $> 250$  px)
- Edit `tusk.conf` to change file



Figure : `graphics/opentusk_logo.jpg` [106 x 70]

`tusk.conf`

```
"Logo" : "/graphics/opentusk_logo.jpg",
```



# Login Elephant

- Edit code/style/login.css to change file

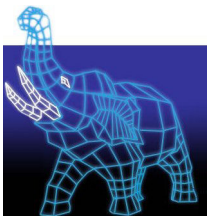


Figure : graphics/elephant\_home.jpg [320 x 333]

login.css:28

```
background: right 10px no-repeat url('/graphics/  
elephant_home.jpg');
```



# Login Gradient

- Edit code/style/login.css to change file



Figure : graphics/gradient.jpg [1 x 683]

login.css:19

```
background: top left repeat-x url('/graphics/gradient.jpg');
```



## Lower Left Logo

- Edit code/style/login.css to change file



Figure : graphics/icons/tufts\_logo.gif [148 x 98]

login.css:96

```
background: 0 0 no-repeat url('/icons/tufts_logo.gif')  
#336699;
```



# Bottom Logo

- Edit code/style/style.css to change file



Figure : graphics/icons/bottomlogo.gif [207 x 87]

style.css:1422

```
background:center center no-repeat url('/icons/bottomlogo.gif');
```



# Case Logo

- Edit code/tusk/case/tmpl/header to change file



Figure : graphics/case/header.gif [254 x 39]

header:38

```
<td valign="bottom" width="1\%"><a href="/home" >  
  </a></td>
```



# Mobile Logo

- Edit code/tusk/mobi/tmpl/prepend to change file



Figure : graphics/mlogo.gif [110 x 40]

prepend:22

```
<div>" /></div>
```



# Favicon

- `code/htdocs/favicon.ico` in Icon format
- Can use gif instead
- To change to gif, edit files:
  - `code/tusk/eval/administrator/ref_sheet`
  - `code/tusk/tmpl/prepend`
  - `lib/Forum/MwfPlgInclude.pm`



Figure : `code/htdocs/favicon.ico`





# Coming Up...

- 1 Config
- 2 Graphics
- 3 Styles and Colors**



# Styles and Colors

- Customize OpenTUSK colors and themes for your site
- Many places to customize
- Styles and colors can come from:
  - Mason files in `code/tusk`
  - CSS files in `code/style`
  - XML and XSL files in `code/HSCML` and `code/XSL`
  - Perl modules in `lib`
  - Database
- Majority of styles can be changed in Mason and CSS



# Resources

- Official website:  
<http://opentusk.org/>
- Wiki documentation:  
<https://wikis.uit.tufts.edu/confluence/display/TUSKpub/Home>
- Source code:  
<https://github.com/opentusk/Opentusk>

